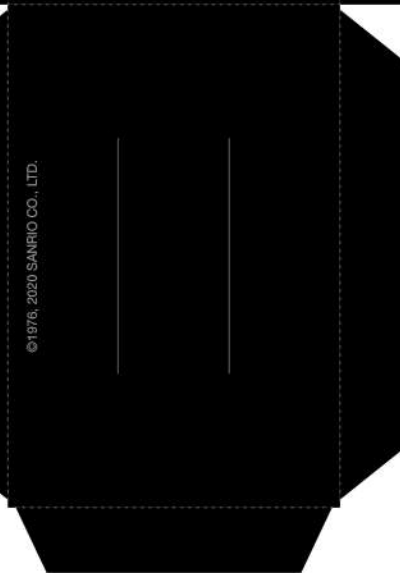
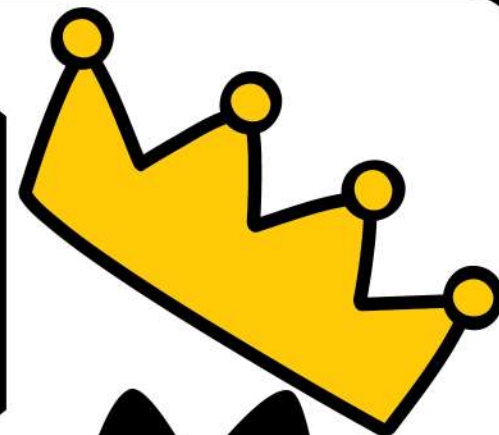
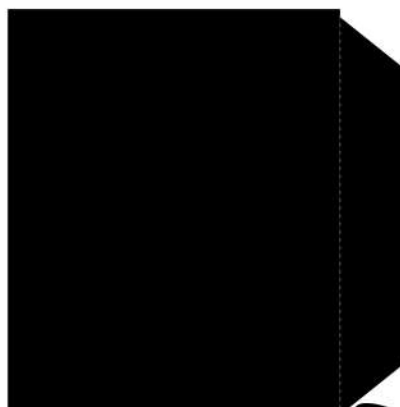
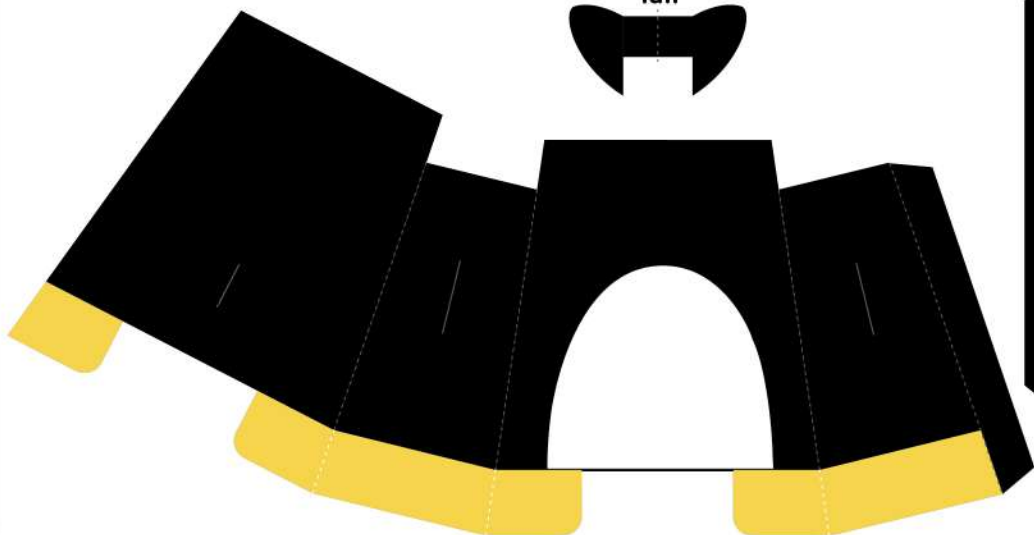
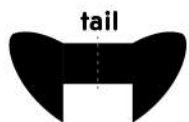
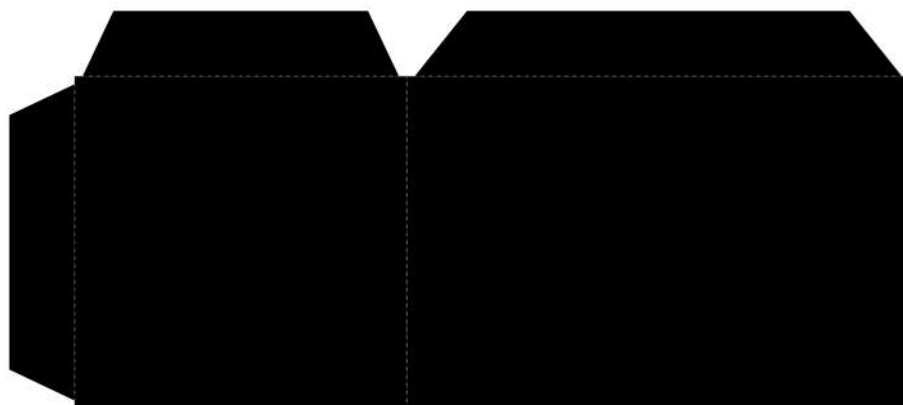
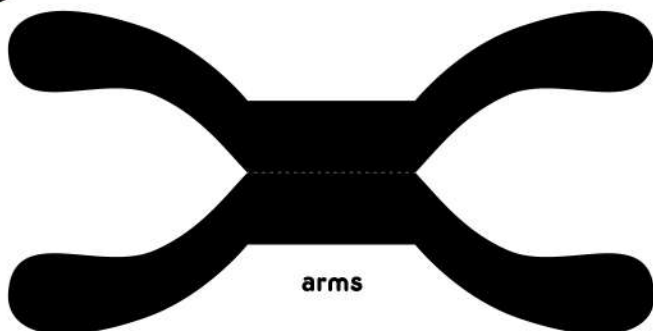
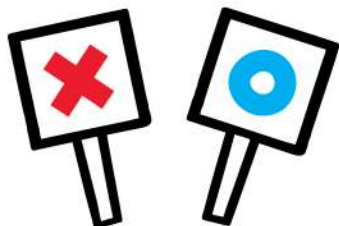
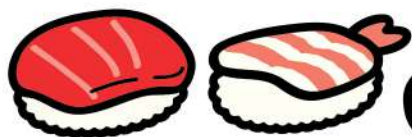


©1976, 2020 SANRIO CO., LTD.

KEROPI paper friend

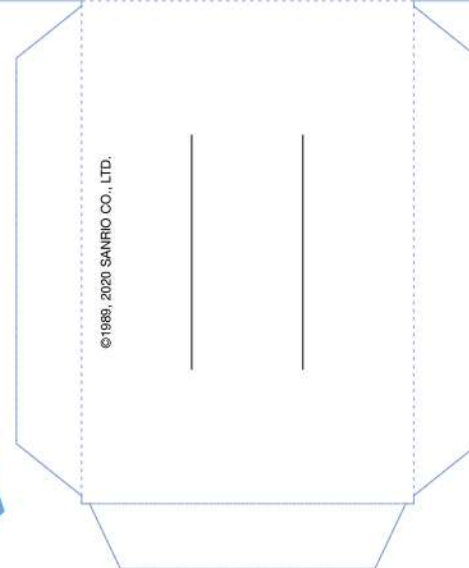
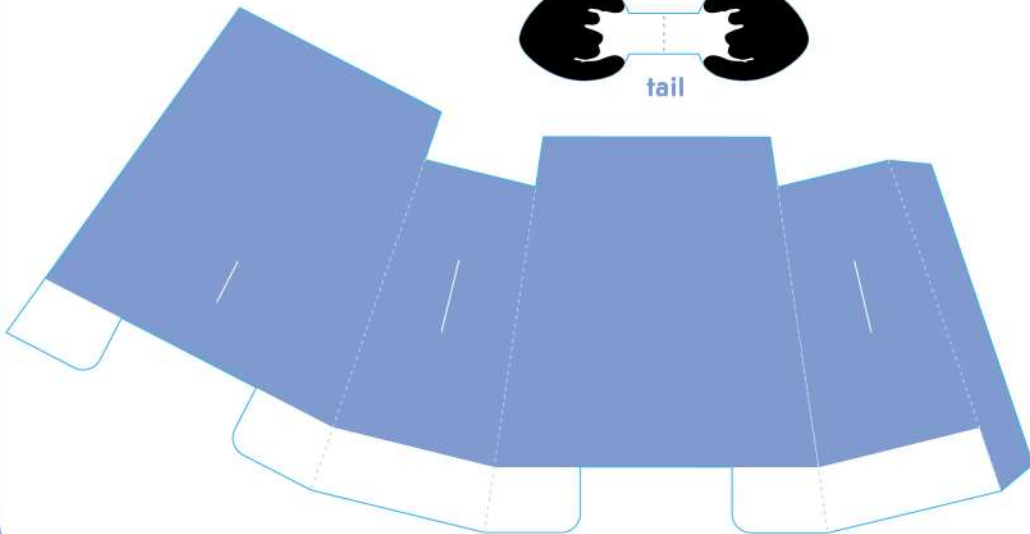
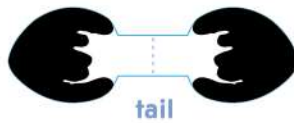
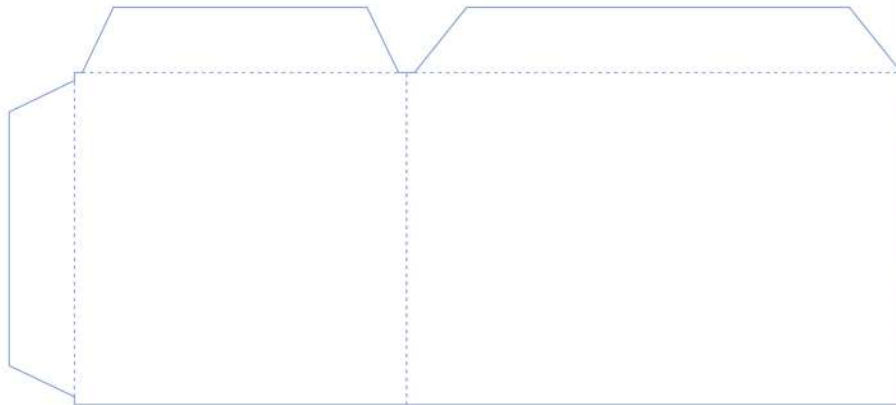
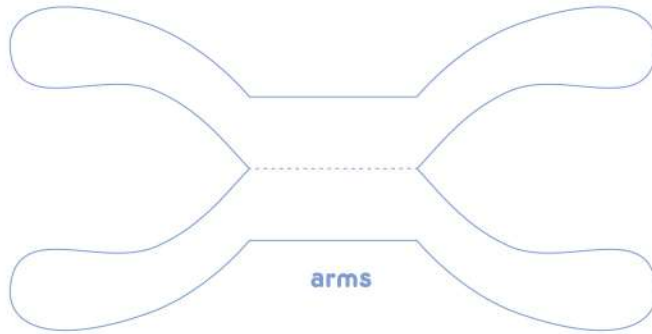
1. Cut out on solid lines.
2. Fold on dashed lines.
3. Fasten arms to themselves using glue or tape.
4. Insert arms into body.
5. Make head starting with back using glue or tape on tabs. Attach face panel last.
6. Attach body to base of head.
7. Cut out and attach your favorite accessory.
8. Enjoy!



©1976, 2020 SANRIO CO., LTD.

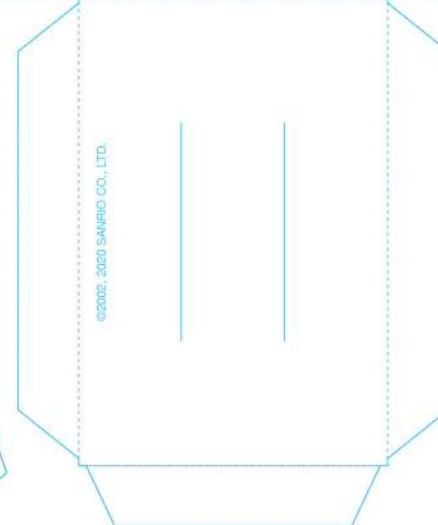
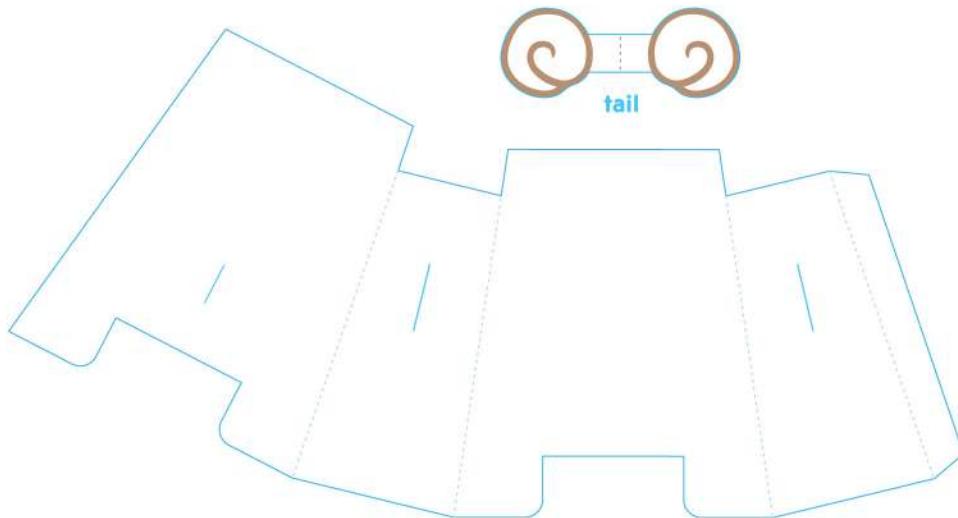
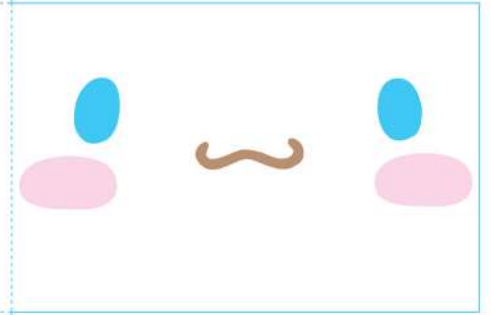
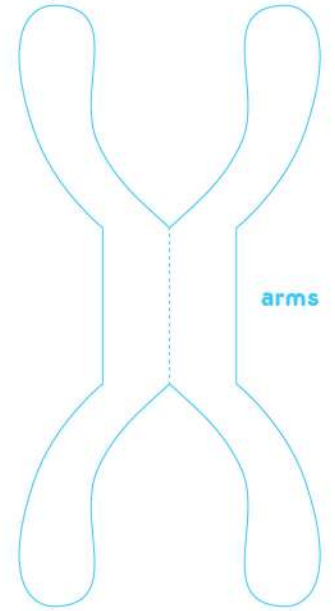
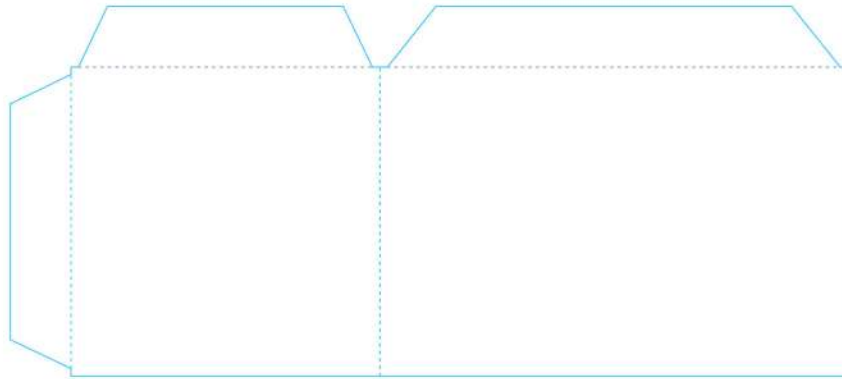
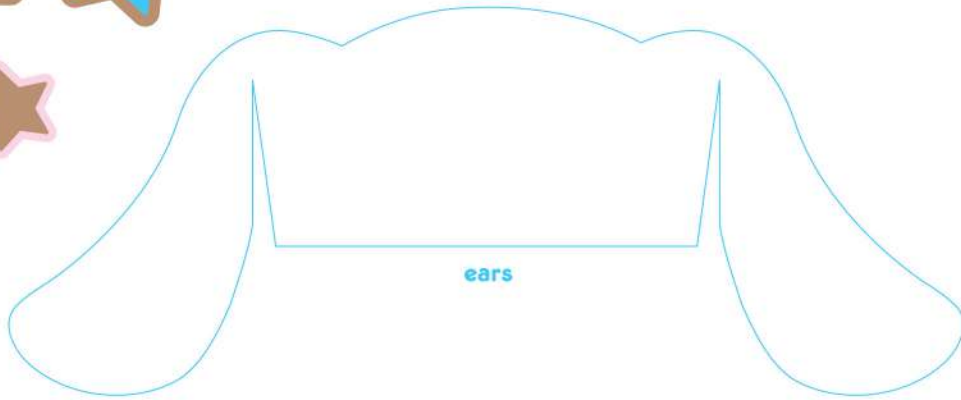
BADTZ-MARU™ paper friend

1. Cut out on solid lines.
2. Fold on dashed lines.
3. Fasten arms & tail to themselves using glue or tape.
4. Insert arms & tail into body.
5. Make head starting with back using glue or tape on tabs. Attach face panel last.
6. Attach body to base of head.
7. Cut out and attach your favorite accessory.
8. Enjoy!



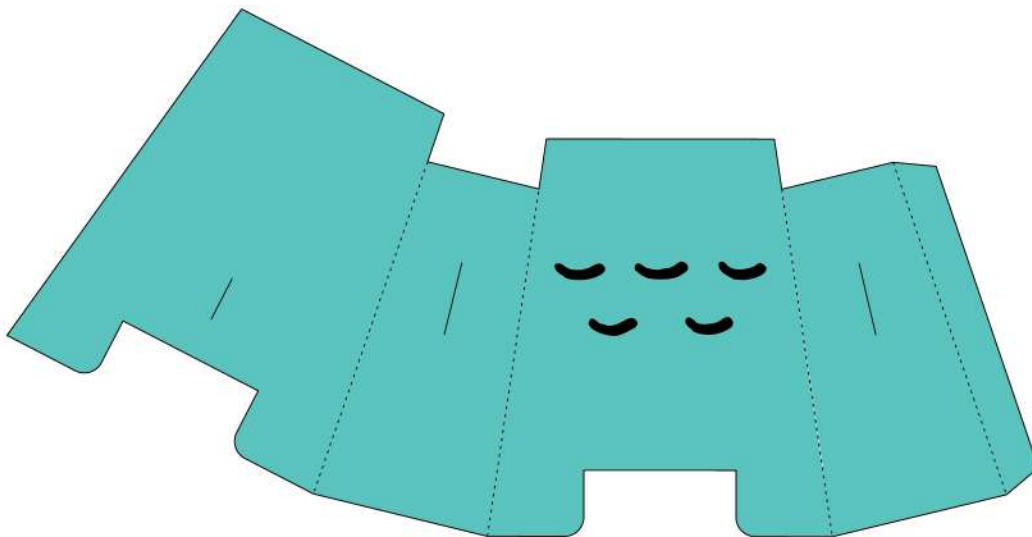
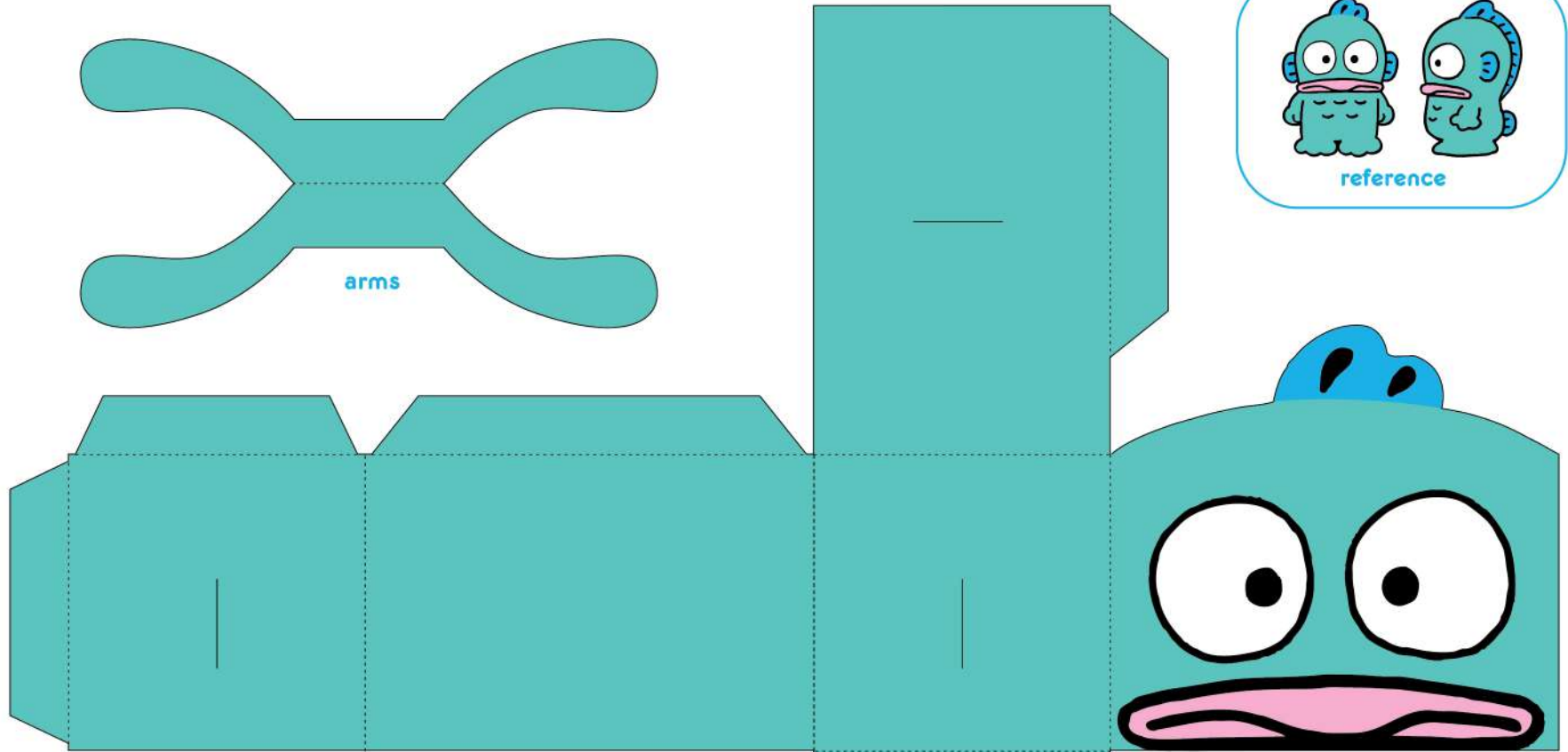
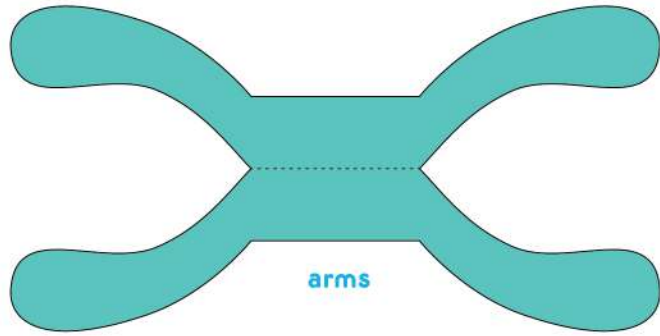
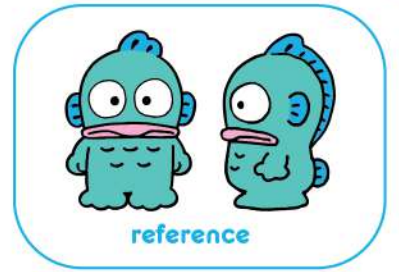
POCHACCO™
paper friend

1. Cut out on solid lines.
2. Fold on dashed lines.
3. Fasten arms & tail to themselves using glue or tape.
4. Insert arms & tail into body.
5. Make head starting with back using glue or tape on tabs. Attach face panel last.
6. Attach body to base of head.
7. Cut out and attach your favorite accessory.
8. Enjoy!



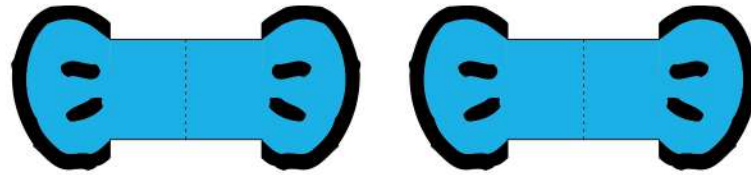
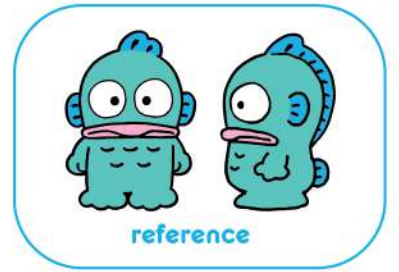
cinnamoroll
paper friend™

1. Cut out on solid lines.
2. Fold on dashed lines.
3. Fasten arms & tail to themselves using glue or tape.
4. Insert arms & tail into body.
5. Make head starting with back, slide ears behind face before using glue or tape on tabs. Attach face panel last.
6. Attach body to base of head.
7. Cut out and attach your favorite accessory.
8. Enjoy!

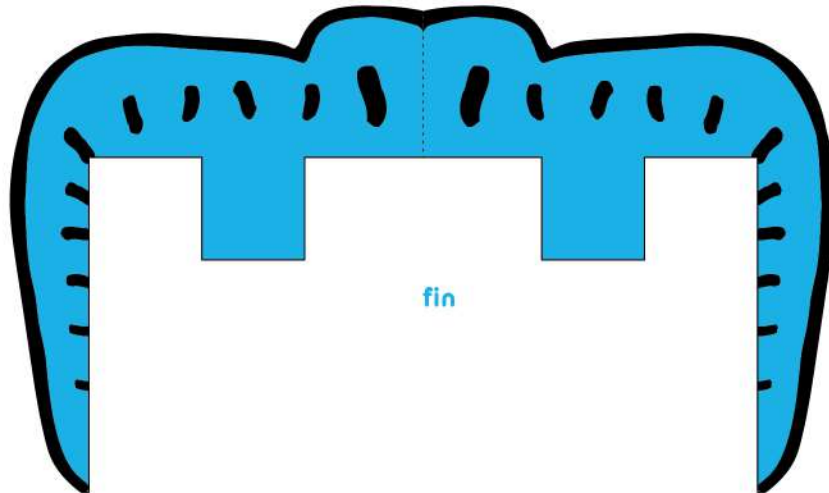


HANGYODON™ paper friend

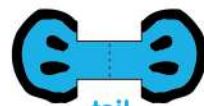
1. Cut out on solid lines.
2. Fold on dashed lines.
3. Fasten arms & tail to themselves using glue or tape.
4. Insert arms & tail into body.
5. Make head starting with back using glue or tape on tabs. Attach face panel last.
6. Attach body to base of head.
7. Attach ears and fin to head.
8. Cut out and attach your favorite accessory.
9. Enjoy!



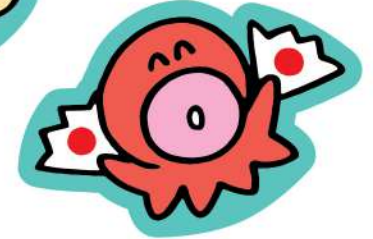
ears



fin

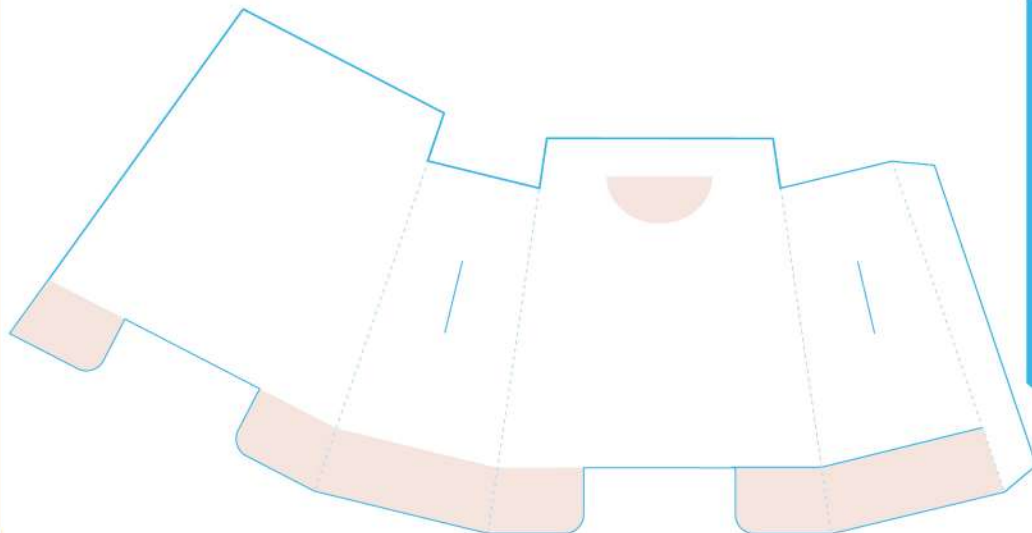
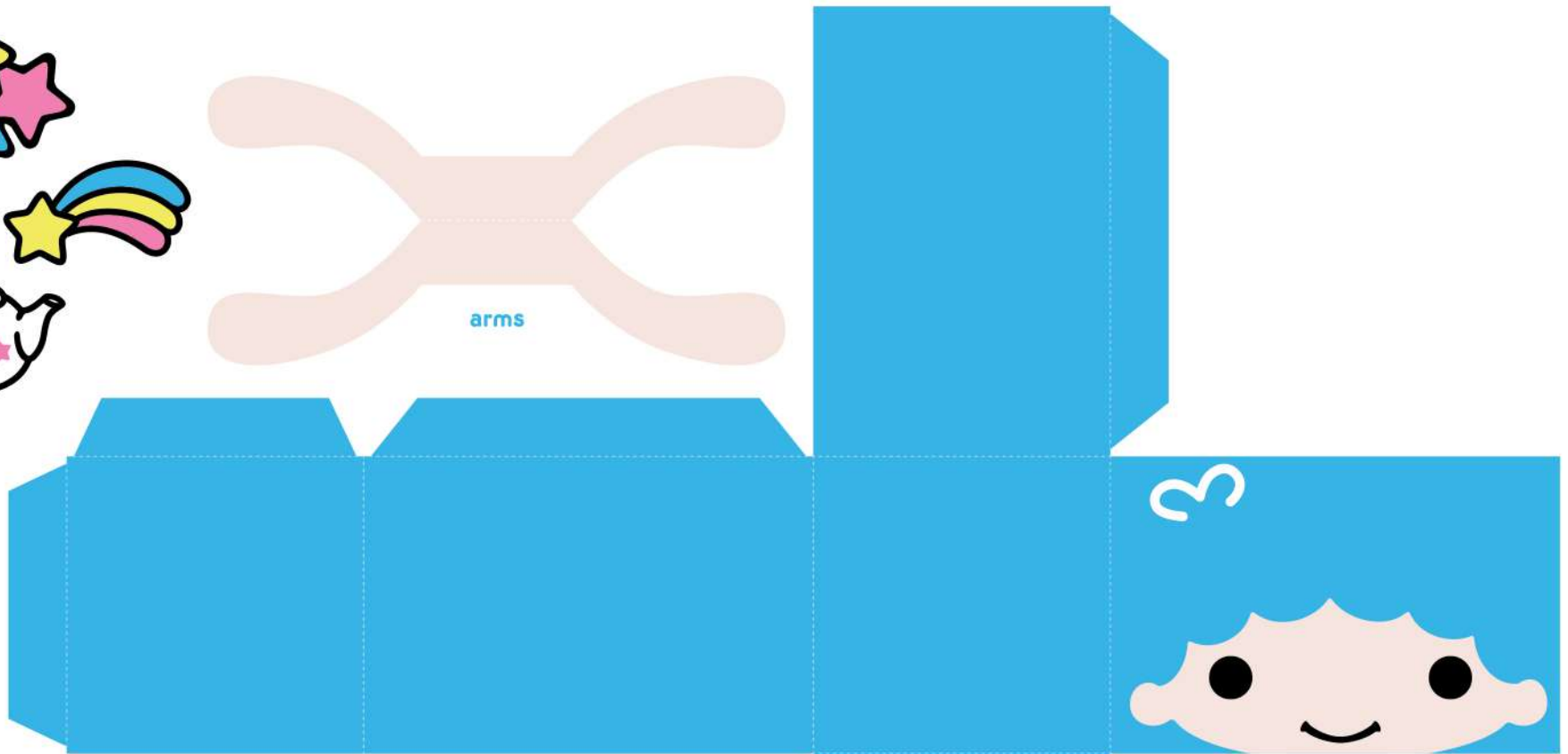
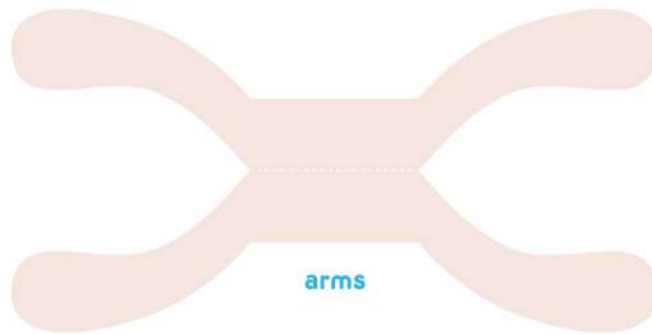


tail



HANGYODON™ paper friend

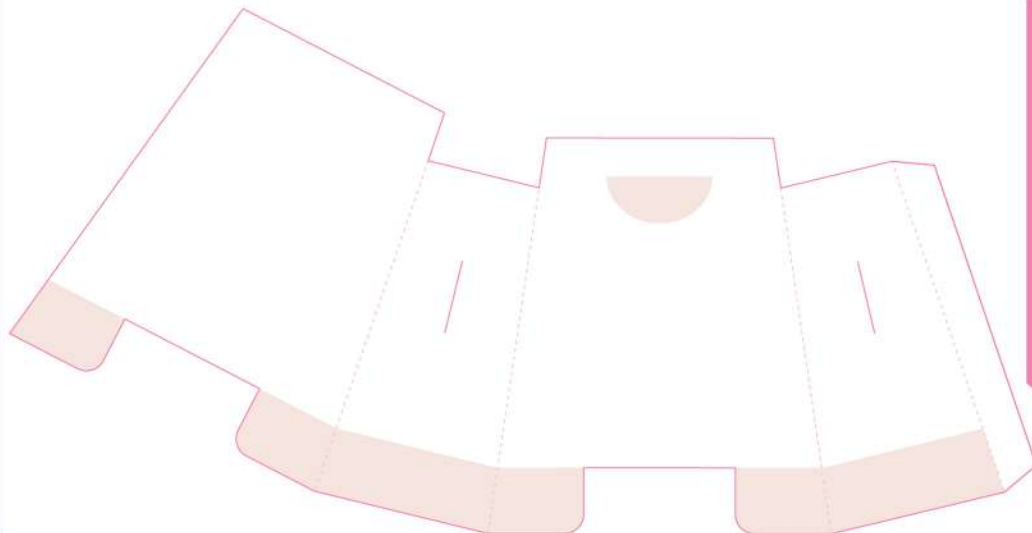
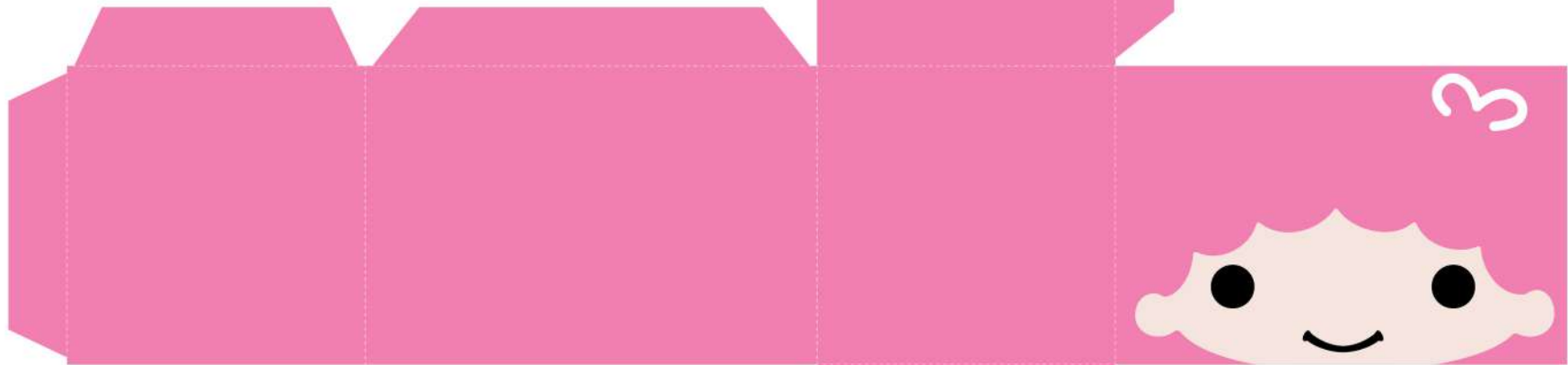
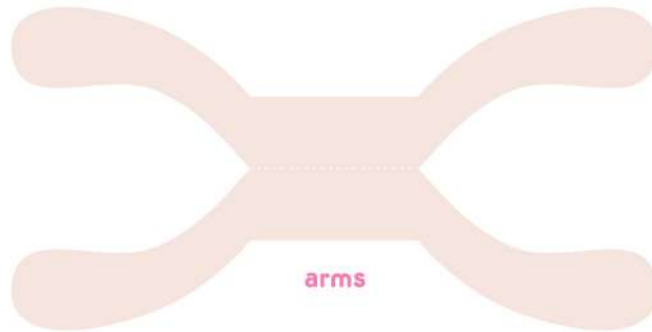
1. Cut out on solid lines.
2. Fold on dashed lines.
3. Fasten arms & tail to themselves using glue or tape.
4. Insert arms & tail into body.
5. Make head starting with back using glue or tape on tabs. Attach face panel last.
6. Attach body to base of head.
7. Attach ears and fin to head.
8. Cut out and attach your favorite accessory.
9. Enjoy!



©1976, 2020 SANRIO CO., LTD.

★ LittleTwinStars® ★ paper friend

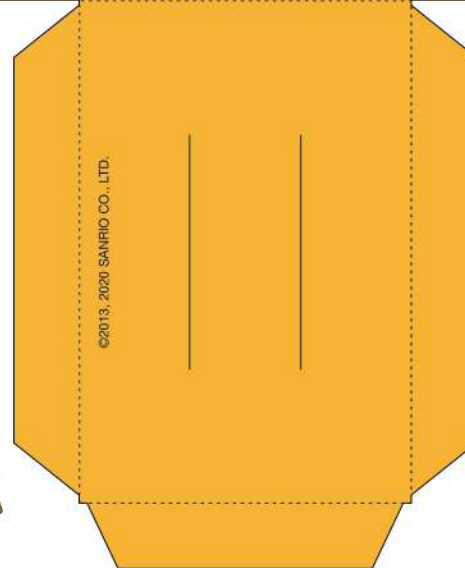
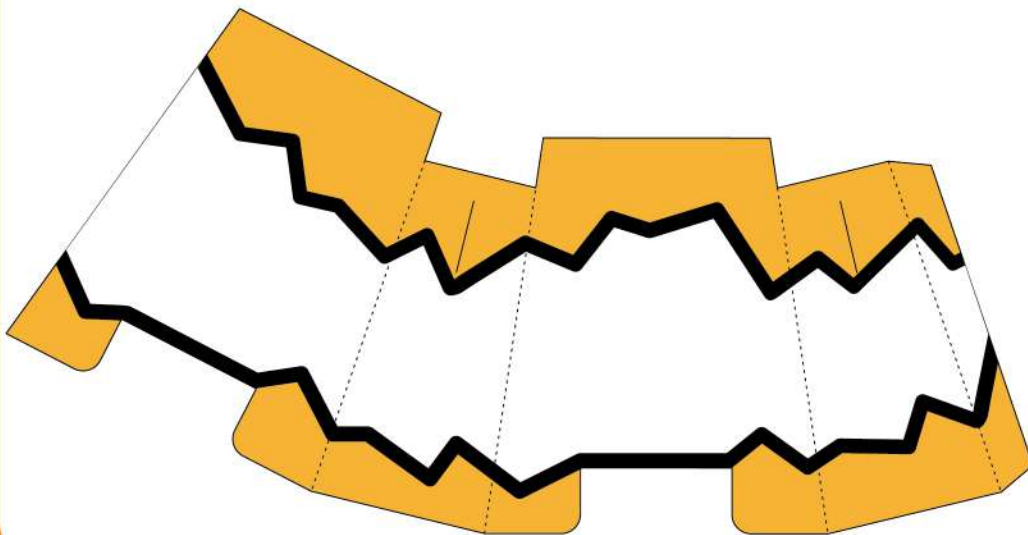
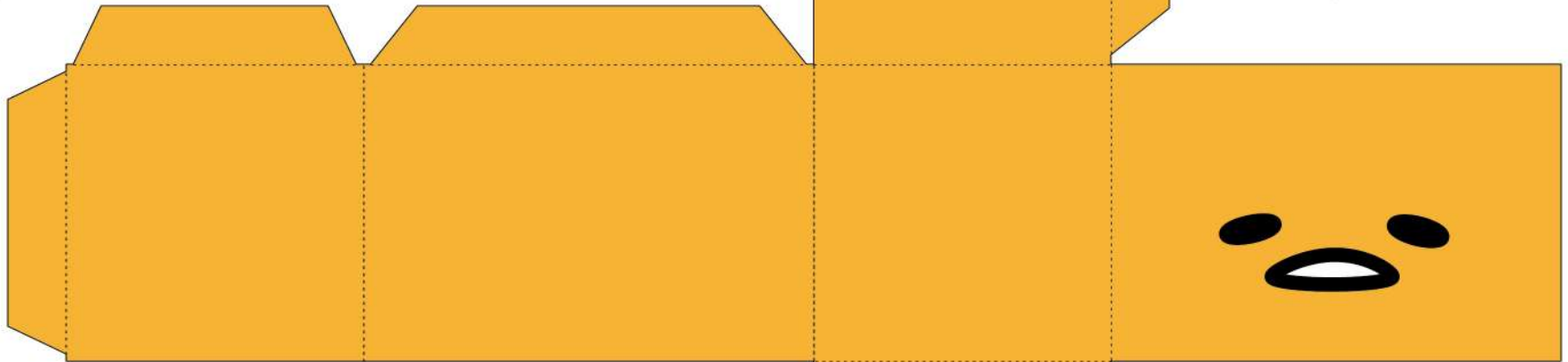
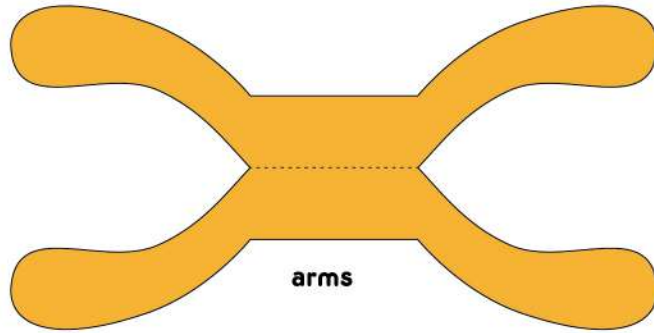
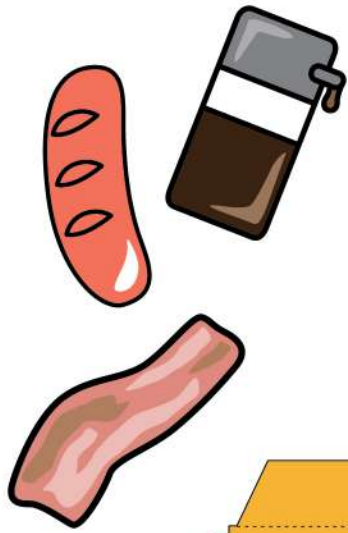
1. Cut out on solid lines.
2. Fold on dashed lines.
3. Fasten arms to themselves using glue or tape.
4. Insert arms into body.
5. Make head starting with back using glue or tape on tabs. Attach face panel last.
6. Attach body to base of head.
7. Cut out and attach your favorite accessory.
8. Enjoy!



©1976, 2020 SANRIO CO., LTD.

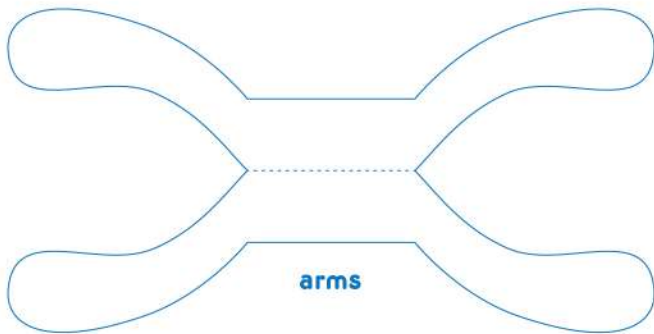
★ LittleTwinStars™ ★ paper friend

1. Cut out on solid lines.
2. Fold on dashed lines.
3. Fasten arms to themselves using glue or tape.
4. Insert arms into body.
5. Make head starting with back using glue or tape on tabs. Attach face panel last.
6. Attach body to base of head.
7. Cut out and attach your favorite accessory.
8. Enjoy!

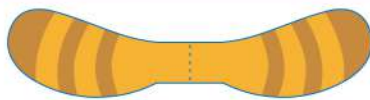
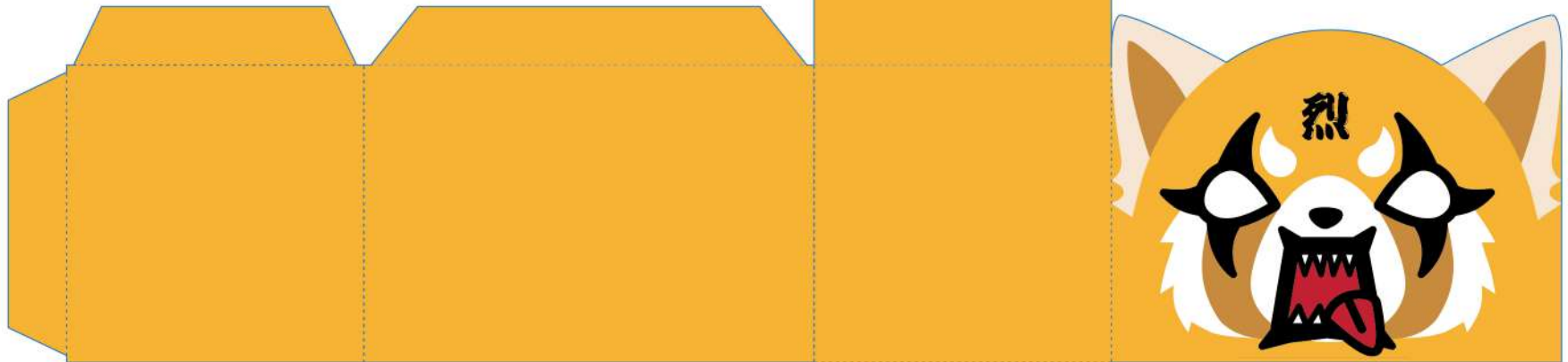
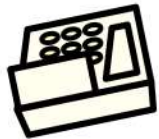


gudetama™

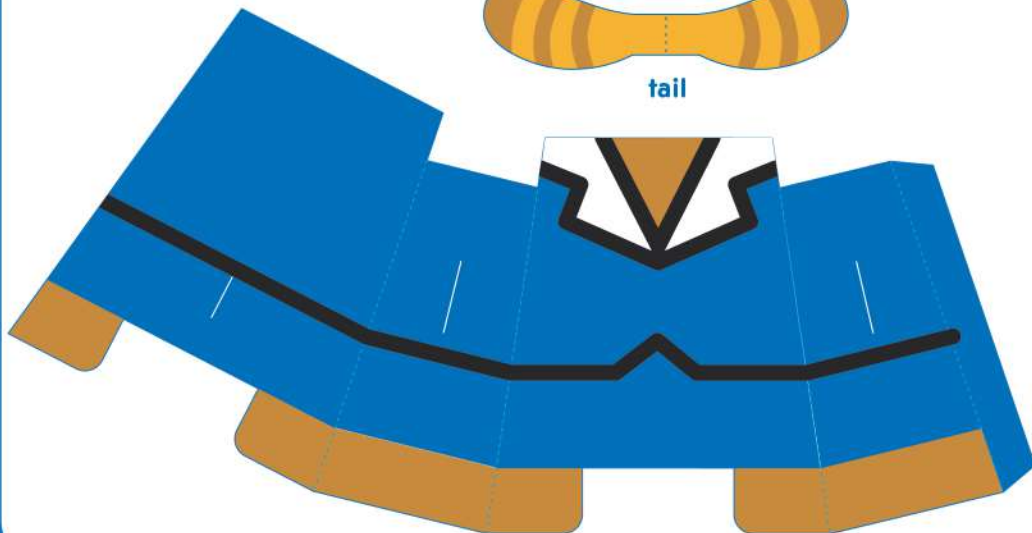
1. Cut out on solid lines.
2. Fold on dashed lines.
3. Fasten arms to themselves using glue or tape.
4. Insert arms into body.
5. Make head starting with back using glue or tape on tabs. Attach face panel last.
6. Attach body to base of head.
7. Cut out and attach your favorite accessory.
8. Enjoy!



arms



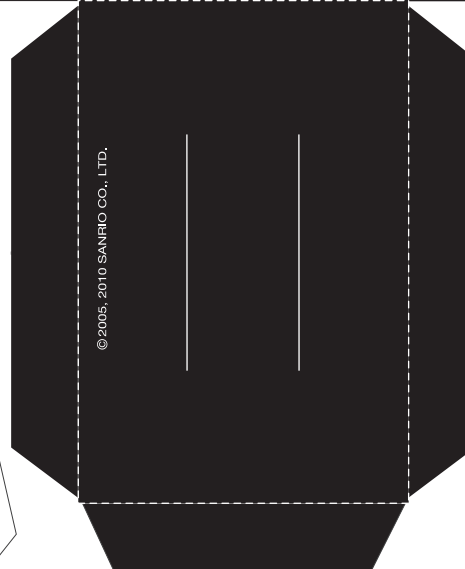
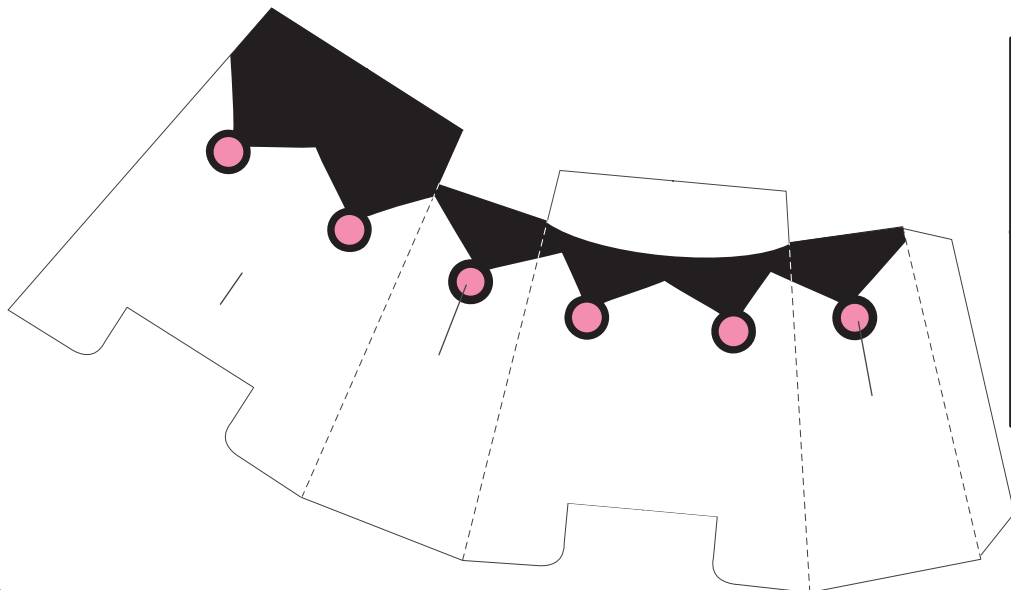
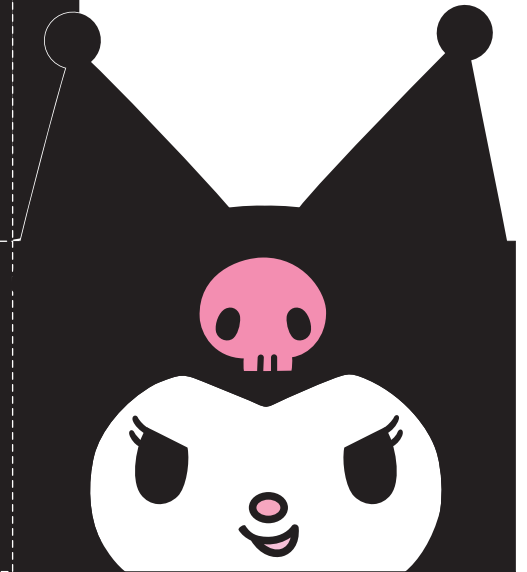
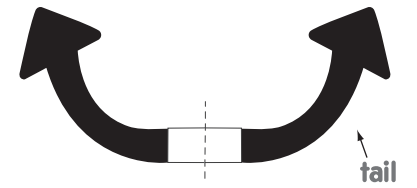
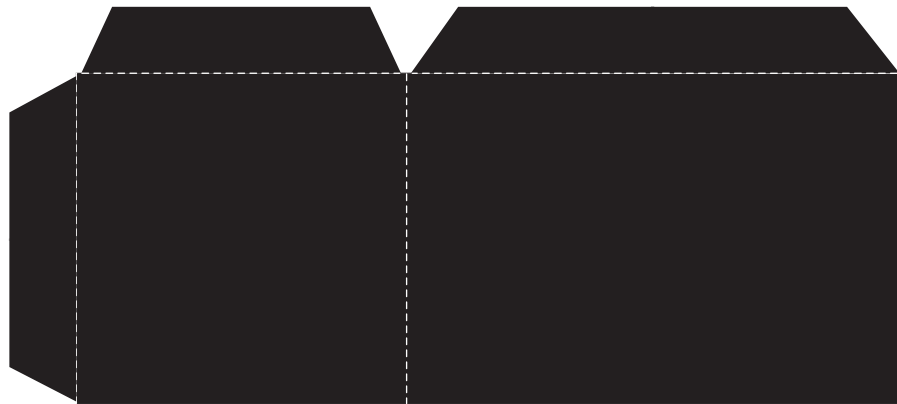
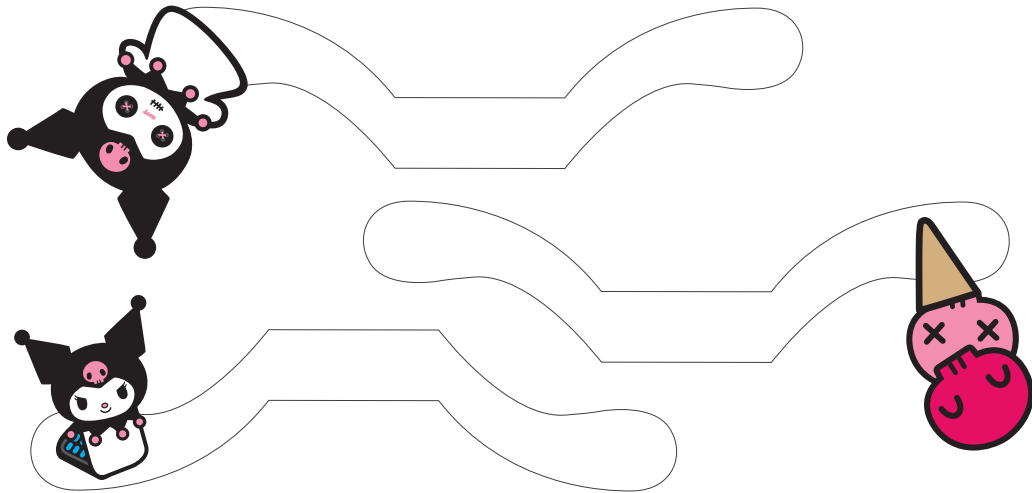
tail



©2015, 2020 SANRIO CO., LTD.

Aggretsuko™ paper friend

1. Cut out on solid lines.
2. Fold on dashed lines.
3. Fasten arms & tail to themselves using glue or tape.
4. Insert arms & tail into body.
5. Make head starting with back using glue or tape on tabs. Attach face panel last.
6. Attach body to base of head.
7. Cut out and attach your favorite accessory.
8. Enjoy!



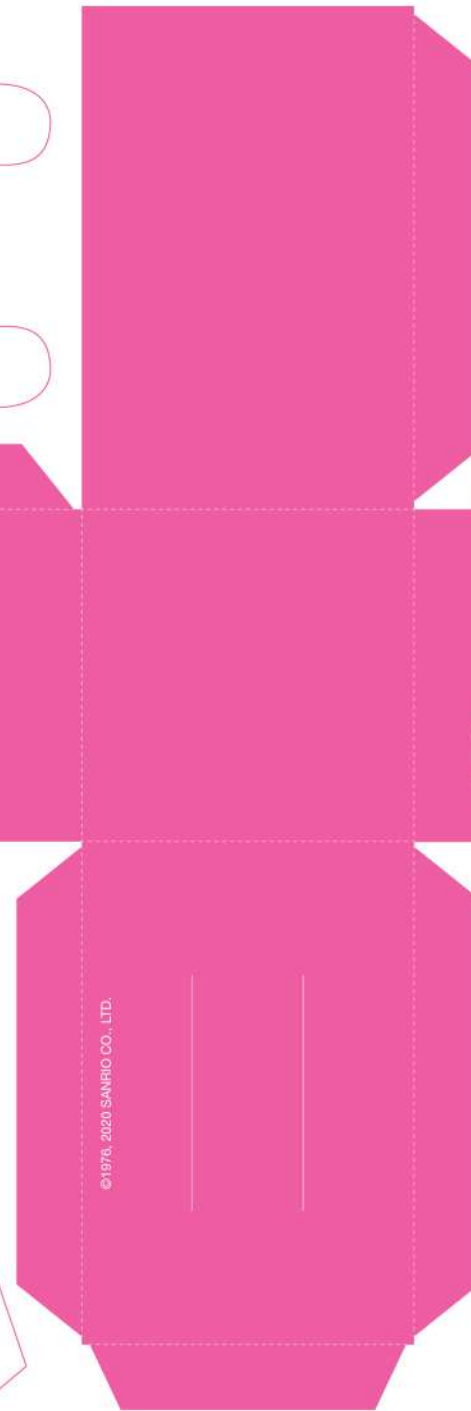
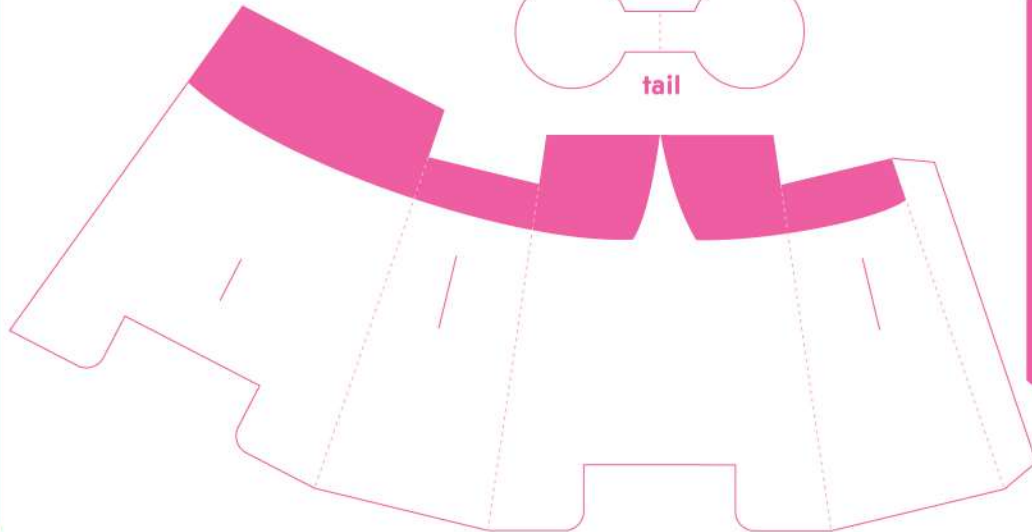
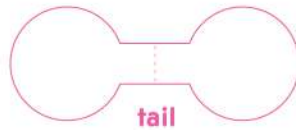
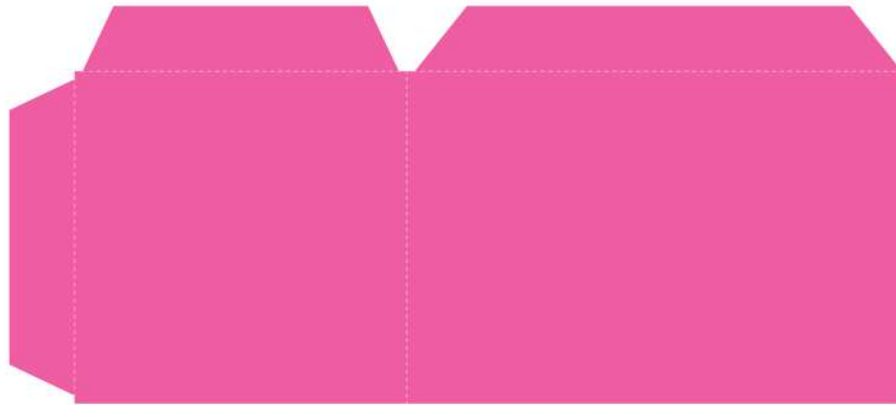
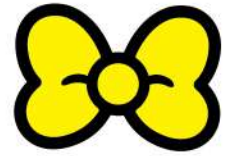
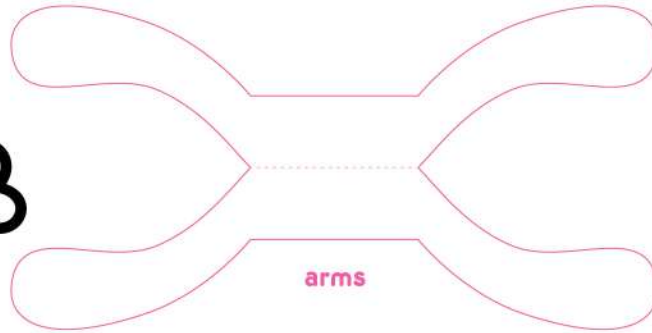
© 2005, 2010 SANRIO CO., LTD.

KUROMI® paper friend

1. Cut out on solid lines.
2. Fold on dashed lines.
3. Insert hands and tail into body.
4. Attach body to base of head.
5. Make head starting with back.
6. Attach face panel last.
7. Voila!



©76, '88, '93, '96, '12 SANRIO CO., LTD.

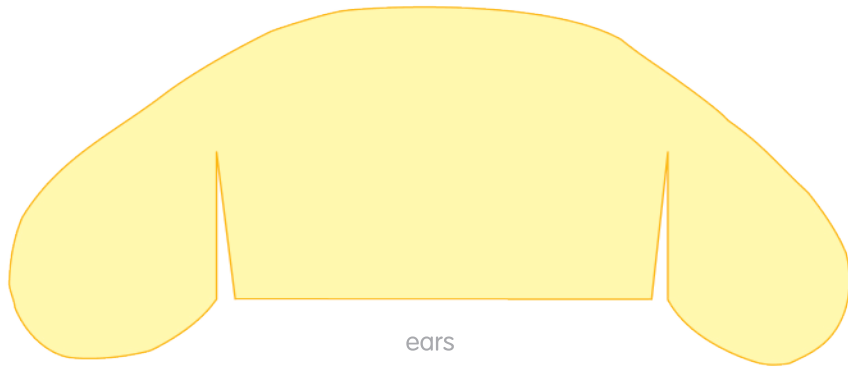


♥ MY MELODY ♥ paper friend

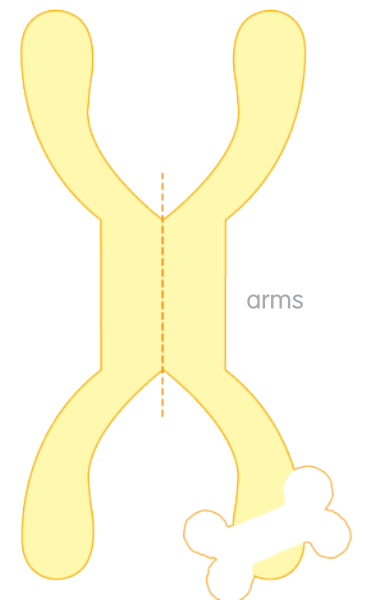
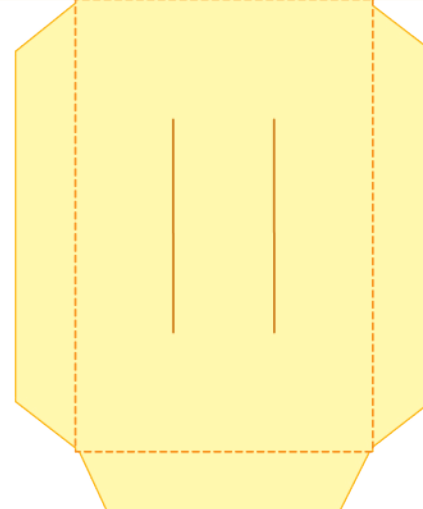
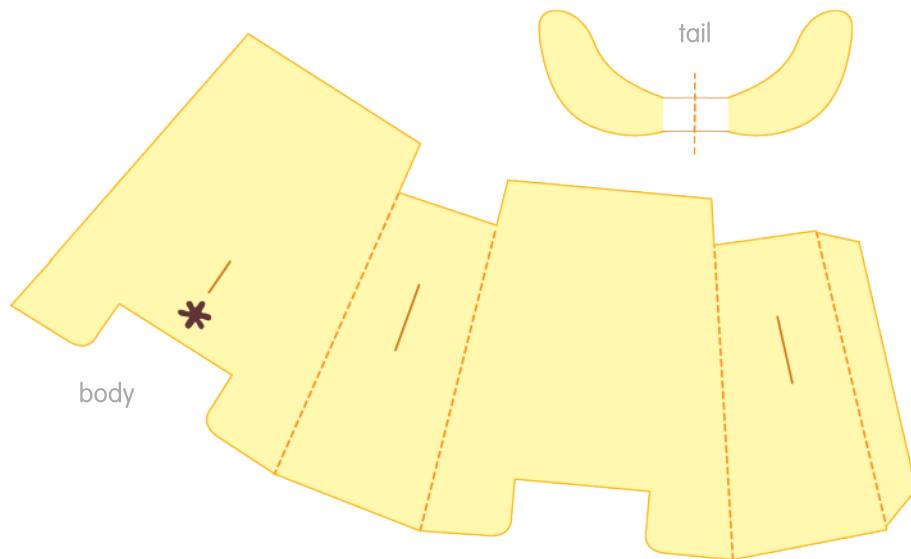
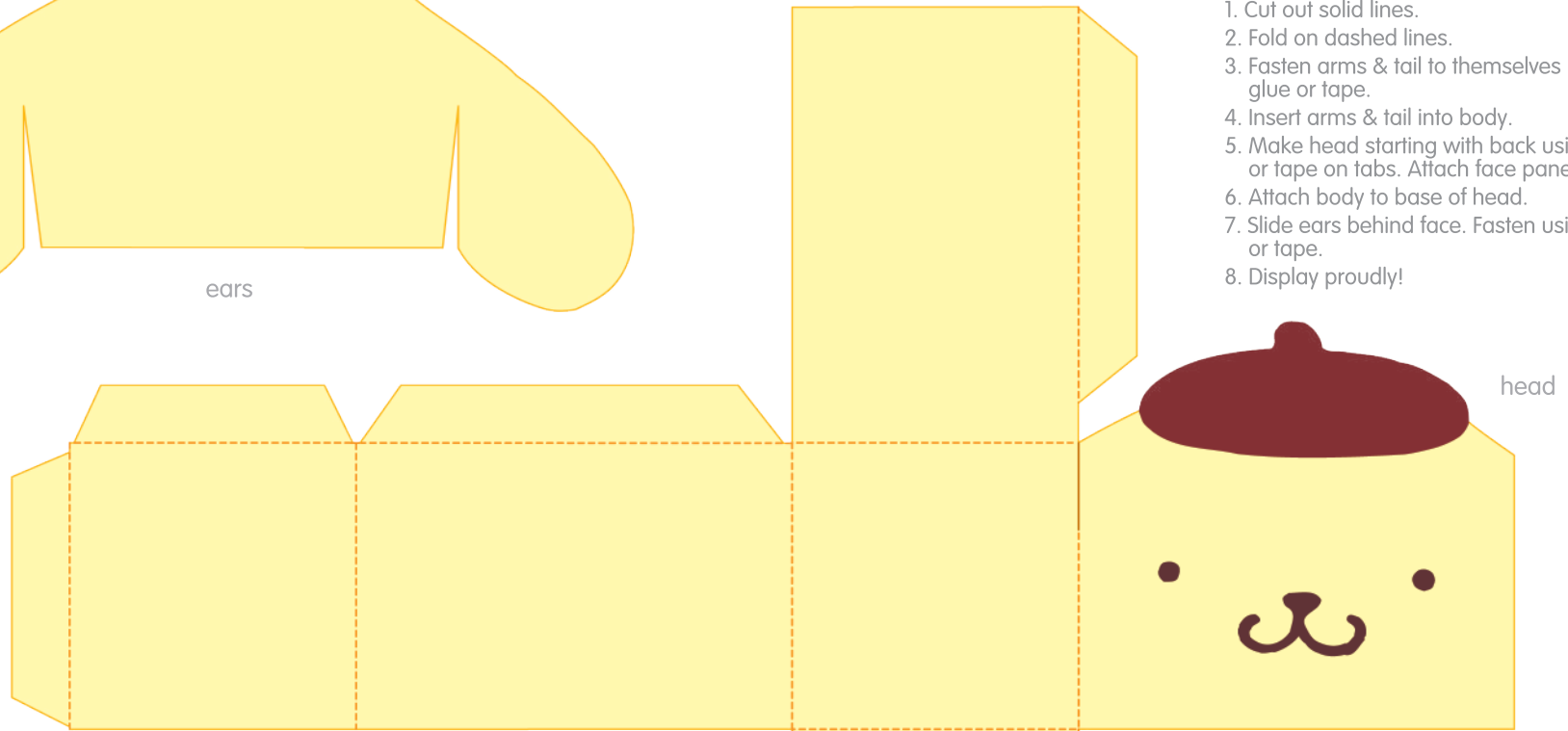
1. Cut out on solid lines.
2. Fold on dashed lines.
3. Fasten arms & tail to themselves using glue or tape.
4. Insert arms & tail into body.
5. Make head starting with back using glue or tape on tabs. Attach face panel last.
6. Attach body to base of head.
7. Cut out and attach your favorite accessory.
8. Enjoy!

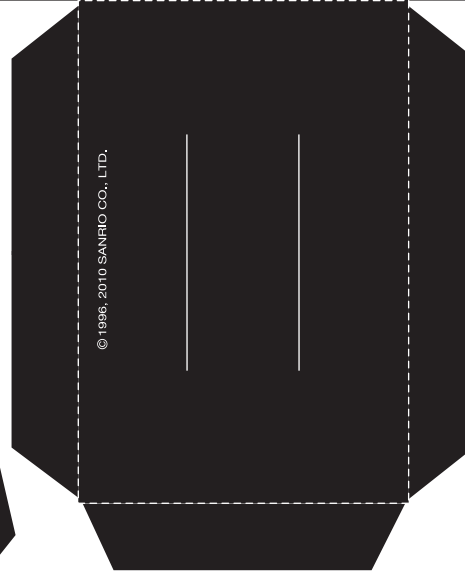
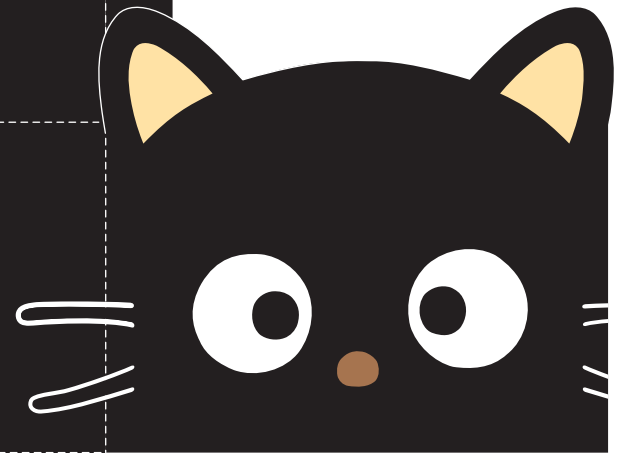
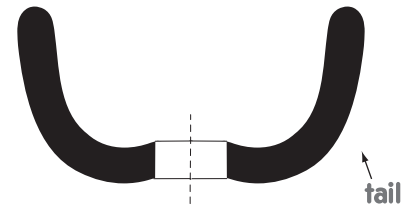
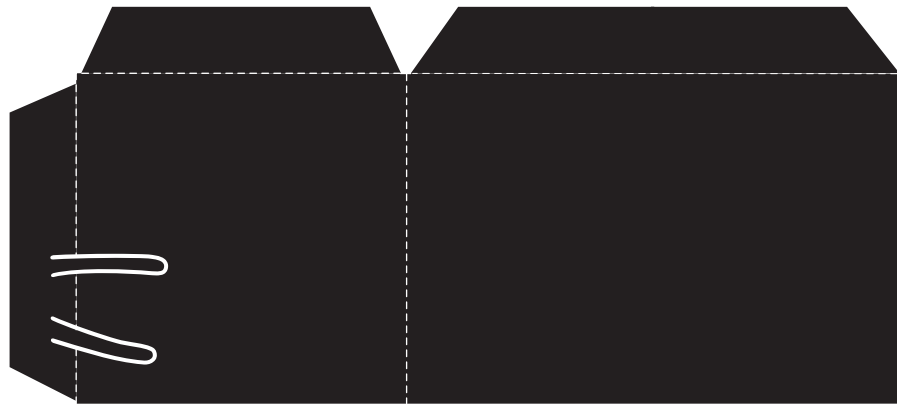
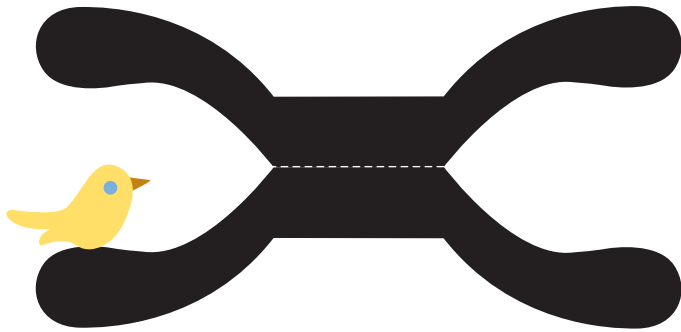
Purin™ paper friend

1. Cut out solid lines.
2. Fold on dashed lines.
3. Fasten arms & tail to themselves using glue or tape.
4. Insert arms & tail into body.
5. Make head starting with back using glue or tape on tabs. Attach face panel last.
6. Attach body to base of head.
7. Slide ears behind face. Fasten using glue or tape.
8. Display proudly!



purin





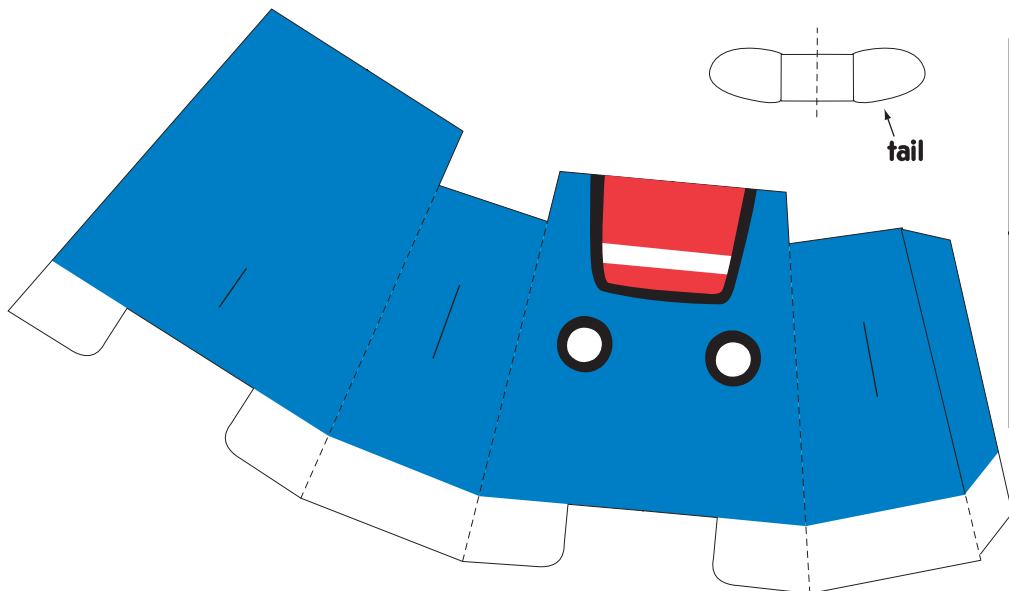
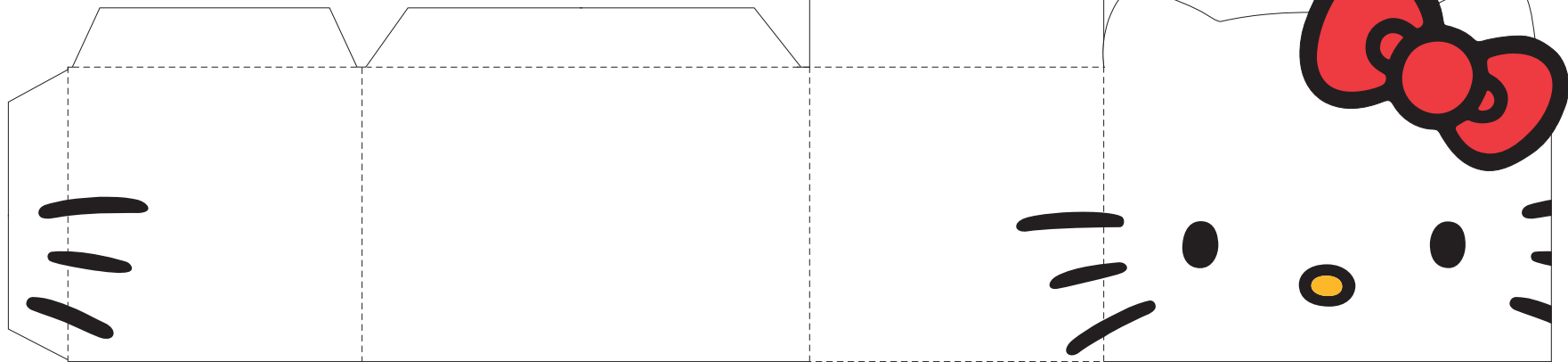
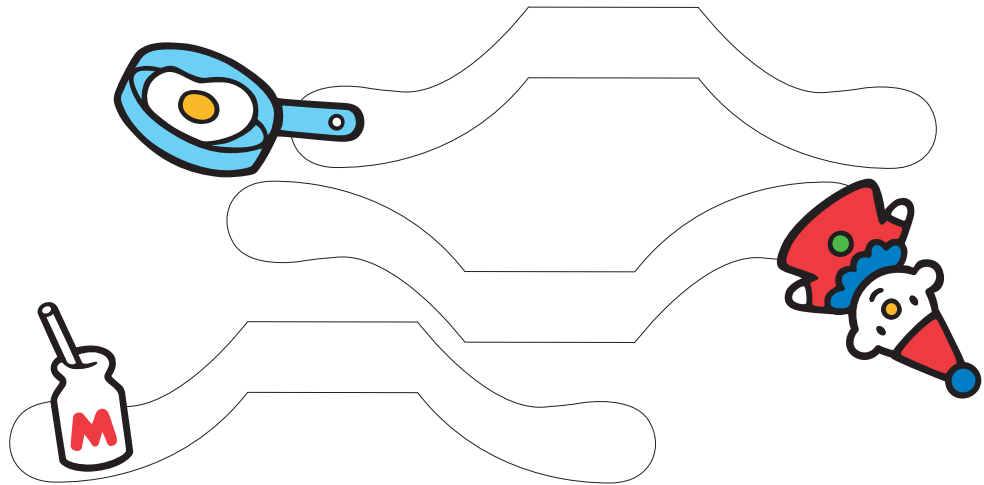
Chococat[®] paper friend

1. Cut out on solid lines.
2. Fold on dashed lines.
3. Insert hands and tail into body.
4. Attach body to base of head.
5. Make head starting with back.
6. Attach face panel last.
7. Attach a scarf.
8. Voila!

© 1996, 2010 SANRIO CO., LTD.



©76, '88, '93, '96, '12 SANRIO CO., LTD.



© 1976, 2010 SANRIO CO., LTD.

HELLO KITTY[®] paper friend

1. Cut out on solid lines.
2. Fold on dashed lines.
3. Insert hands and tail into body.
4. Attach body to base of head.
5. Make head starting with back.
6. Attach face panel last.
7. Voila!



©76, '88, '93, '96, '12 SANRIO CO., LTD.